

We are a proud American company
that has provided machining,
welding and fabrication services
to power, sugar, agriculture, and
industrial customers world-wide
for over 25 years.



Central Machining & Pump Repair, Inc.

★ Industrial

★ Commercial





We offer
the
CUSTOMER
excellent
service by
providing
solutions, quality
parts, and competitive

pricing. Our company provides personal assistance, regular visits, and prompt pick-ups and deliveries. We provide 24-hour emergency service, accurate bids and quotes, and we're known for quick turnarounds to meet your needs. Furthermore, we provide advanced machining, welding and fabrication, metalizing/flame spraying, line boring, and rebuilding or repairing of metal parts and mechanical components for companies such as:

Basin Electric Power Co-op

Archer Daniels Midland Co.

Montana Power Co.

American Crystal Sugar Co.

Great River Energy Co.

Manitoba Hydro

Otter Tail Power Co.

Minn-Dak Farmers Cooperative

Minnkota Power Cooperative

Enbridge Pipeline

Corps of Engineers

Tesoro Mandan Refinery

Montana Dakota Utilities

Earth Movers

Dakota Gasification Co.

Holly Imperial Sugar

Ondeo De'gremont Inc.

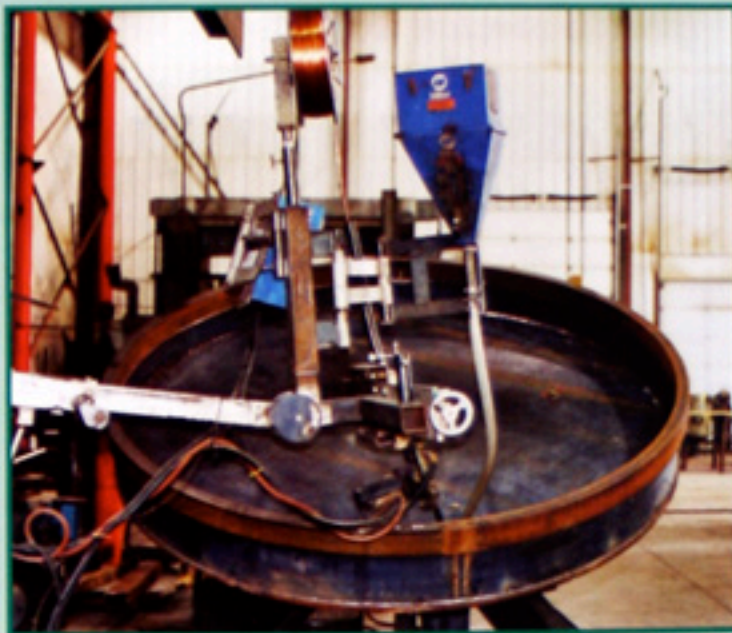
Alliance Pipeline Inc.

Providing **SERVICES** to Meet Your **NEEDS**

POWER INDUSTRY

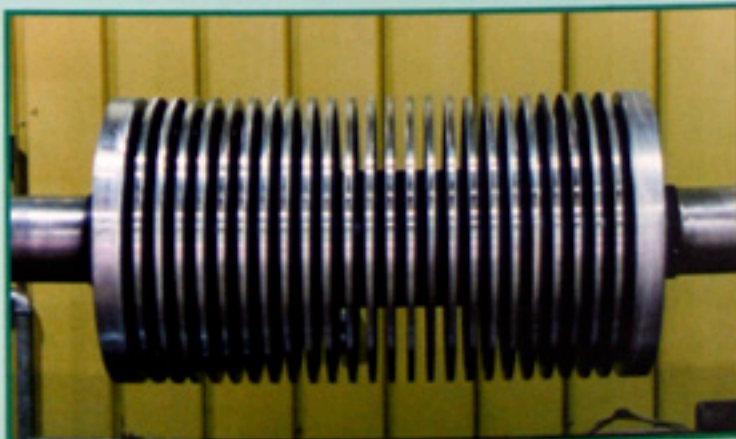
Pulverizing Rings:

- Manufactured or rebuilt to OEM specifications
- Constructed out of A572 GR-50 and A36 plate steel
- Submergible arc welded with hard surfacing wire to extend the life of the ring to withstand the vigorous coal crushing process
- Machined to specifications on Vertical Turning Lathe that has a 165" swing



Fuel Conditioner/Rotor:

- Manufactured or rebuilt shafts to OEM specifications
- Manufactured lock nut and washer
- Flame spraying of shaft, bearing and seal surfaces for extended wear and longevity



Journal Hub:

- Rebuilt to OEM specifications
- Machined on a Vertical Turning Lathe that has a 72" swing
- Welded and machined outer and inner surfaces



Coal Dust Collection System:

- Made to customer specifications
- Constructed out of 304 stainless steel
- New impeller shaft and pillow block bearings
- Breaching/ducting and catwalk manufactured to your requirements



Rail Cars:

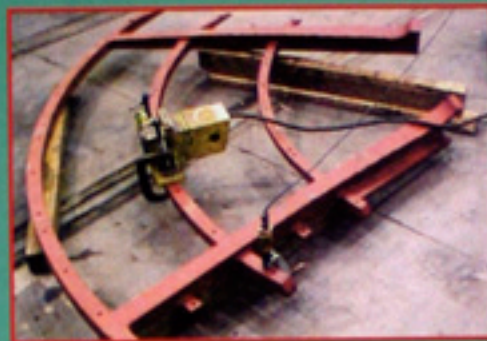
- Replace worn skins with new carbon steel by plasma cut, air arc, and welding processes
- Manufactured or rebuilt doors
- Sandblasting, painting, and stenciling offered



SUGAR INDUSTRY

Diffuser Trees & Parts:

- Water jet cut and manufactured new out of A572 Grade-50 material
- Arc welded, drilled, painted, and bonal certified stress relieving to meet customer specifications
- Designed to withstand the stress of sugar pulp diffusing process



Beet Hopper:

- Manufactured or repaired to customer specifications



Centrifugal Basket:

- Manufactured or rebuilt to OEM specifications



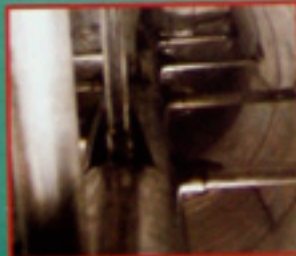
Strike Receiver:

- Manufactured out of 304SS, available in duracorr, 3CR12 and A-36
- Inlets and outlets installed



- Rotating element with bearings and seals

- Fabricated and welded to meet customer requirements



Fine Pellet Screen:

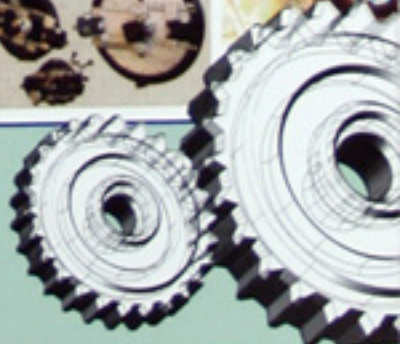
- Bottom trough out of AR400 for extended life
- Auger assembly out of AR400 for abrasion resistance
- Rotating screen element
- Clean out doors



ON-SITE OR SPECIALTY WORK

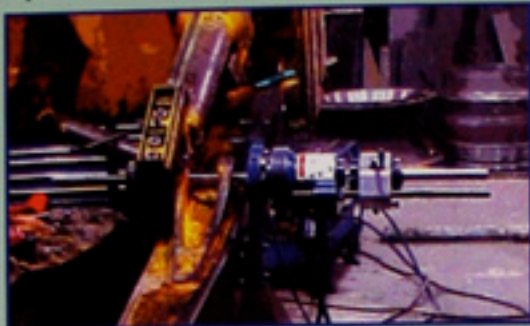
Portable Machining:

- Revolutionary NB Clamshells capable of cutting all wall thickness and alloys with minimal time and effort
- Severing, beveling, ID boring, facing and OF turning are just a few tasks performed by machines
- Services: flange facing, valve replacement, weld beveling, align boring, hole boring and milling
- Highly trained machinist with OSHA safety training and DOT drug and alcohol testing
- Heat treating or stress relieving
- All portable machines and cutters are available for rental
- New technology that permits us to hydrostatic test pipes in minutes



Line Boring & Welding:

- We utilize state-of-the-art Bore Tech equipment
- Highly trained machinist will travel to your company to line bore and weld your equipment
- Manufactured bushings and sleeves
- Welded and machined to OEM or customer specifications



Flame Spraying/Hard Surfacing:

- We use state-of-the-art Sulzer Metco equipment
- Applications for ferrous and non-ferrous metals
- Variety of coatings to meet your corrosion and erosion resistant specifications
- Fusible and non-fusible coatings
- Flame spraying and heat fusing process of connector pins



Welding or Fabrication:

- Welders are OSHA safety trained and tested for drugs and alcohol
- Welders are familiar with "Hot Work Permits"
- ASME or AWS certification if required
- SMAW, GMAW, FCAW, GTAW for P-8 carbon or P-1 stainless



CNC MACHINING & INDUSTRIAL PUMP REPAIR & OTHER SERVICES

CNC Lathe:

- We utilize state-of-the-art Gibbs Cam software to run our CNC machines
- Travel: X-Axis 30", Y-Axis 18", and Z-Axis



CNC Mill:

- State-of-the-art equipment with Gibbs Cam software
- Milling time is shortened for mass production runs, turning the savings over to the customer
- Travel: X-Axis 30", Y-Axis 20", and Z-Axis



Continued on back panel



Steve Bigelow and Curt Latendresse, co-owners of Central Machining & Pump Repair, Inc., are dedicated leaders with over 50 years combined experience in the machining, welding, agricultural and industrial fields. Central Machining's success can be attributed to the one-on-one relationships that Curt and Steve have cultivated with their customers, by providing them with accurate and prompt bids, competitive pricing, and the finished products themselves. Their commitment to you and their employees is "second to none."

Curt and Steve lead a dedicated and skilled team of technicians that have in excess of 100 years of combined service in the fields of welding, fabricating, and machining. They are committed to empowering their employees, and have created a harmonious atmosphere and a safe work environment. Their employee teams have the experience, skills, and desire to provide excellent products and world-class service.

Because Steve and Curt are providing the necessary leadership and resources, and continuing to upgrade their shop equipment to provide leading edge technology, they are prepared to guarantee Central Machine & Pump's continued success well into the 21st Century.



SAFETY & TRAINING

We are dedicated to providing a safe and healthful environment for our employees and customers, protecting the public, and preserving the company's assets and property. We are members of the North Dakota Safety Council; Energy Coalition for Contractor Safety (ECCS); and the North Dakota Worker's Compensation Risk Management Program. The National Compliance Management Services, Inc., located in Hutchinson, Kansas, has rated all 18 of our Safety and Health Programs at 100%. All of our employees receive OSHA Contractor Safety training and are regularly tested for drugs and alcohol. We here at Central Machining and Pump Repair approach our safety program with a pro-active attitude, putting safety first, ever mindful that the well-being of our employees and customers is vital to the success of our company.

Industrial Pump Repair:

- Repair of bowls and housings
- Manufacturing of impeller wear rings and casings rings
- Repair of impellers
- Locking collars
- New or rebuilt shafts
- New or rebuilt stuffing box



Water Purification/Treatment Tanks:

- Manufactured to OEM or customer specifications
- Fabricated and welded out of stainless or carbon steel alloys
- ASME or AWS welding certification if required



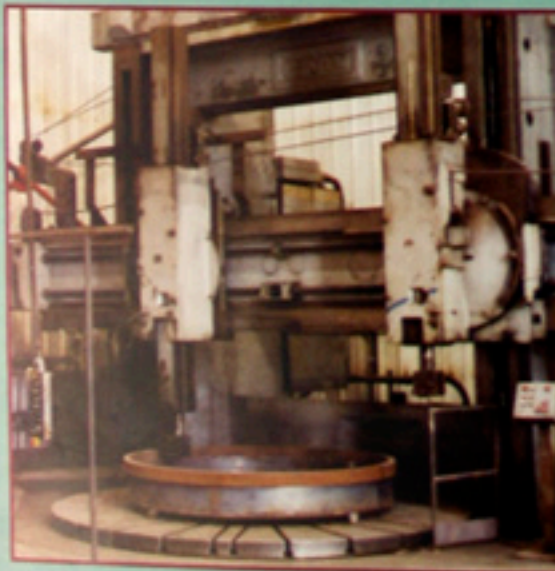
Flaker Roll Grinder:

- Engineered and manufactured to your specifications
- All parts welded and machined in-house
- Used to resurface flake rollers for processing Canola



Pulverizing Heat Ring:

- Machined to customer requirements
- Machined on Vertical Turning Lathe that has a 165° swing



OUR VISION

Be the "Industry Leader" in Welding, Fabrication & Machining of metal products, utilizing quality processes and state-of-the-art equipment, ensuring that we provide you exceptional service.

Manufactured Items:

- Aluminum Fabricated Parts
- Babbitt Bearings
- Belt Support Pans
- Bolts
- Carbon Steel Products
- Collars
- Compressor Rods
- Couplers
- Drive Lines
- Dust Collection Systems
- Frames: Specialized
- Industrial Hoppers
- Intermodal Containers
- Jigs & Figures
- Lantern Pressure Rings
- Latch Pins
- Nuts
- Plungers
- Pulleys
- Railings
- Roll Bars
- Screws: Acme
- Seal Rings
- Shafts
- Sleeves
- Spindles
- Stainless Steel Products
- Studs
- Suspension Bars
- Tertiary Air Scrolls
- Tow Hitches
- Trailers
- Tube & Structural Fabricated Items
- Wear Plates
- Water Treatment Tanks

Repairs/Rebuilds:

- Actuator Tubes (for missiles)
- Axle Housings
- Backhoes
- Collars
- Compressor Rods
- Crawlers
- Cyclone Covers
- Fuel Conditioners/Coal Crushers
- Hitches
- Impellers (including balancing)
- Industrial Pumps (Internal/External)
- Intercept Valves
- Lantern Pressure Rings
- Loaders
- Lowboys
- Plungers
- Rotary Air Seals
- Rail Cars/Coal Trucks
- Rotor Assemblies
- Seal Rings
- Shafts
- Sleeves
- Taper Lock Fly Ash Diffusers
- Shaft Clutches (D8 & D9's)

- Truck Boxes
- Truck Frames
- Wear Plates

Services:

- Air Arc Cutting
- Bonal Certified Stress Relieving
- Breaking/Shearing
- Broaching
- Cutting: Plasma
- Cutting: Oxygen & Acetylene
- Drive Line Repair
- Emergency Service Available
- Fabricating
- Flame Spraying
- Flywheel Repair
- Grinding: Surface
- Heliarc
- Hydraulic Repair
- Machining (CNC/Manual)
- On-Site Portable Machining/Welding
- Portable Line Boring: On-Site/Field/Shop
- Welding: ASME/AWS/API
- Welding (Oxygen/Acetylene)

We want you to keep us in mind for competitive quotes, bids, and pricing to repair or manufacture your mechanical or metal products.

**NO JOB IS TOO BIG
OR TOO SMALL.**

Call Us Today!

Central Machining & Pump Repair, Inc.

4127 Burdick Expressway East
Minot, North Dakota 58701

Phone: 701-852-2405

Toll Free: 1-800-735-4069

Fax: 701-852-2478

www.centralmachining.com

Email: cmp@srt.com

