

CMP EQUIPMENT LIST

CNC MILLS: We use GIBBS CAM SOFTWARE with our mills, allowing us to store & save programmed runs for repeat work.



AWEA CNC HORIZONTAL BORING & MILLING MACHINE

- ✚ X-TRAVEL: 78"
- ✚ Y-TRAVEL: 70"
- ✚ Z-TRAVEL: 39"
- ✚ W-TRAVEL: 23"



CNC MILLTRONICS MILL

- ✚ X-TRAVEL: 60"
- ✚ Y-TRAVEL: 30"
- ✚ Z-TRAVEL: 22"



Y:MA SEIKI CNC MILL: BM-1600 CENTER

- ✚ X-TRAVEL: 63"
- ✚ Y-TRAVEL: 31.5"
- ✚ Z-TRAVEL: 31.5"



NEWAY CNC VERTICAL MILL: VM740S

- ✚ X-AXIS: 25.6
- ✚ Y-AXIS: 19.7"

CNC & MANUAL LATHES: We use Gibbs Cam Software with our Lathes, allowing us to store & save programmed runs for repeat work.



LARGE DAEWOO CNC LATHE

- ✚ TRAVEL: X-AXIS BED SWING IS 28"
- ✚ TRAVEL: Y-AXIS CARRIAGE IS 16"
- ✚ TRAVEL: Z-AXIS IS 156"



LEADWELL CNC LATHE:

- ✚ X-AXIS TRAVEL: 17" SWING
- ✚ Z-AXIS TRAVEL: 31" BETWEEN CENTERS



TRU-TURN ENGINE LATHE

- ✚ MAX. SWING OVER BED: 63"
- ✚ MAX. SWING OVER CROSS SLIDE: 48.43"
- ✚ MAX. SWING IN GAP: 80.7"
- ✚ DEMENSIONS: 358.3" L x 82.7" W x 82.3" H
- ✚ CENTER TO CENTER: 20'



PROTAKANG LATHE: Model#TK770N

- ✚ X AXIS: 30"
- ✚ Z AXIS: 122"



LATHE: GURUTZPE

- ✚ DISTANCE BETWEEN CENTERS IS 9'10"
- ✚ SWING: 31-1/2"
- ✚ SWING OVER GAP: 48" DIAMETER X 12"
- ✚ SWING OVER SLIDE: 22"



SUMMIT MECHANICAL LATHE

- ✚ X- AXIS: 20"
- ✚ Y- AXIS: 80"

CONTINUED: MANUAL LATHES



TUDA ENGINE LATHE

- ✚ LENGTH: 10'
- ✚ SWING: 42"
- ✚ UNDER CARRIAGE: 28"
- ✚ BORE SIZE: 12-1/2"



TOOLMEX-LARGE ENGINE LATHE

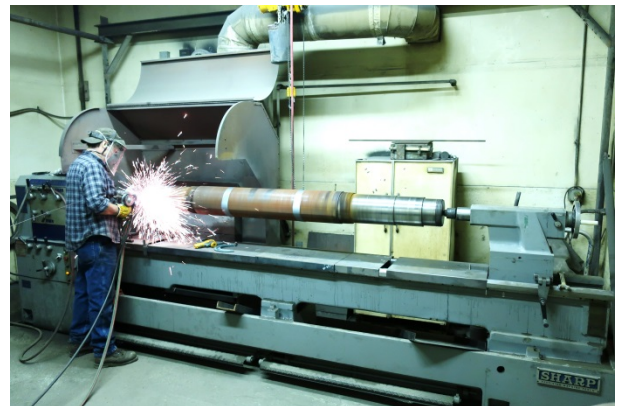
- ✚ DUAL CHUCK: SWING TO TAIL STOCK CENTER IS 118.2"
- ✚ MAXIMUM SWING OVER BED IS 24. 8"
- ✚ MAXIMUM SWING OVER SADDLE IS 15"

MANUAL MILLS:



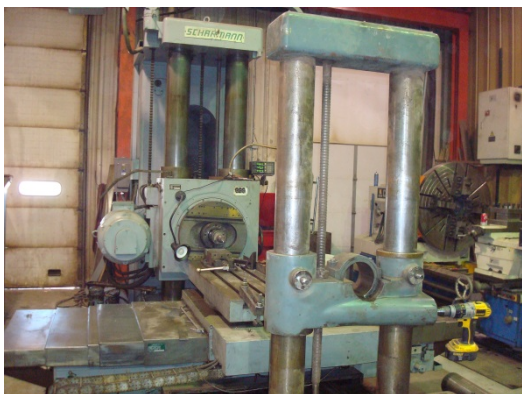
BRIDGEPORT SERIES 2 MILL

- ✚ 11" x 54" TABLE
- ✚ 15" x 30" TRAVEL
- ✚ 40 TAPER



SHARP ENGINE LATHE

- ✚ SWING: 30" X 120" CENTER TO CENTER
- ✚ BORE: 4-1/2"



LARGE HORIZONTAL BORING MILL: SCHARMAN FB100

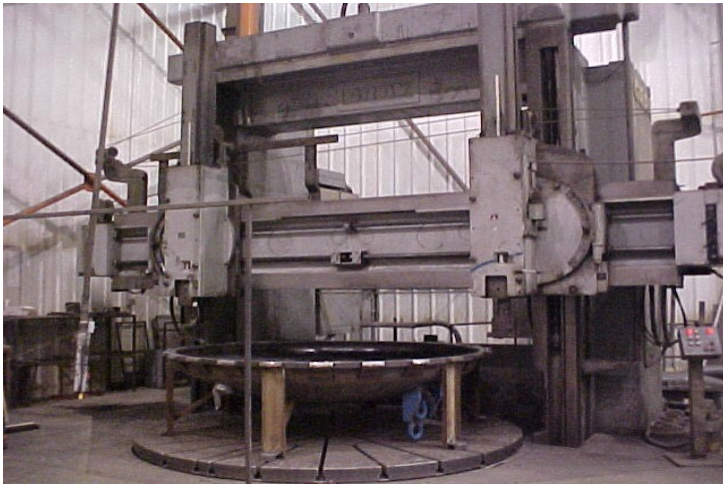
- ✚ CAPABLE OF BORING AND MILLING A VARIETY OF PARTS TO YOUR SPECIFICATIONS, SUCH AS LARGE GEAR BOXES & DIFFERENTIAL GEAR HOUSING SHOWN IN THE PICTURE.
- ✚ CAPABLE: 39-1/2" X 47", X-AXIS: 48", Y-AXIS: 63" Z-AXIS: 40", & W-AXIS: 30"



BRIDGEPORT SERIES I MILL:

- ✚ TABLE BED 11" X 30"

VERTICAL TURNING/BORING MACHINES



LARGE VERTICAL TURNING LATHE: GRAY

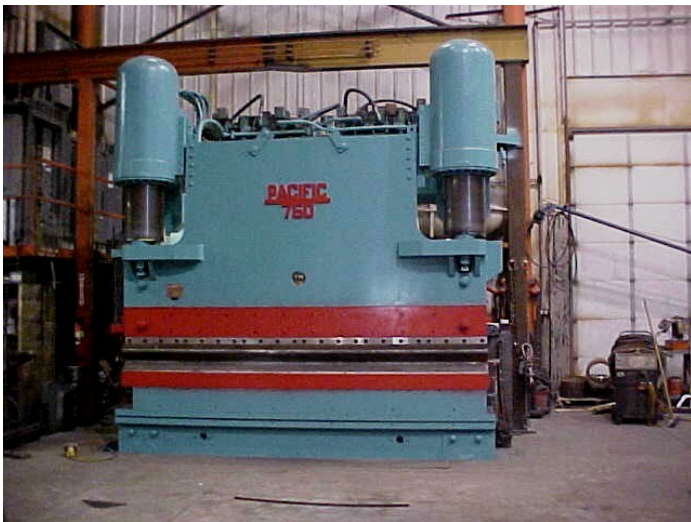
- ✚ 165" OR 13' 9" SWING WITH DUAL HEAD SYSTEM
- ✚ USED TO MACHINE LARGE ITEMS SUCH AS PULVERIZING RINGS AND OTHER LARGE ITEMS FOR THE POWER, SUGAR/PROCESSING, INDUSTRIAL, AND MINING/EXCAVATION INDUSTRY.



SUMMITT VBM:

- ✚ TABLE DIAMETER: 59"
- ✚ MAX SWING DIAMETER: 70"
- ✚ MAX HEIGHT DIAMETER: 47"
- ✚ MINIMUM BORING DIAMETER: 11"

BRAKE PRESSES:



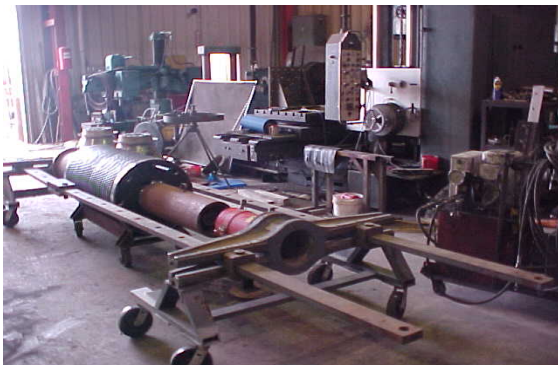
LARGE BRAKE PRESS: 750-TON: PACIFIC

- ✚ CAPABLE OF FORMING/BENDING 3/4" THICK X 12' W PLATE AND 1" THICK X 12' WIDE A-36 PLATE



STANDARD BRAKE PRESS: 200-TON

- ✚ CAPABLE OF FORMING/BENDING 3/8" THICK CARBON PLATE X 12' WIDE



HORIZONTAL PRESS: 100 TON

WELDING EQUIPMENT



LINCOLN ELECTRIC WELDER

4 EACH: S500 POWER WAVES



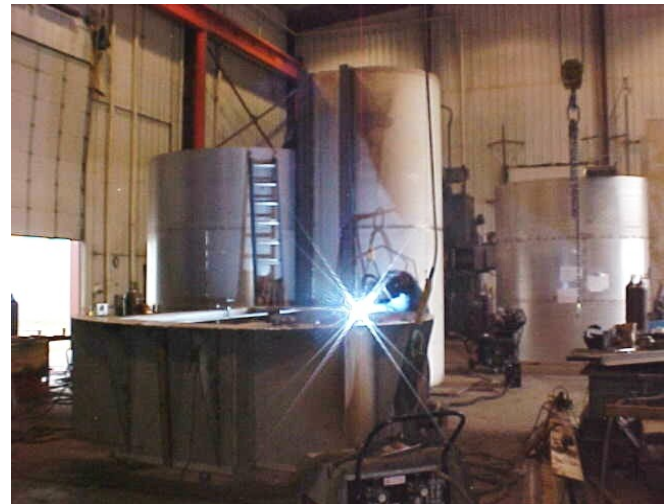
MILLER WELDERS

3 EACH DIMENSION 652

1 EACH DELTAWELD 651



ESAB WARRIOR: WELDER



WELDING SERVICES

- IN-SHOP AND ON-SITE WELDING ON CARBON AND STAINLESS STEEL ALLOYS
- CERTIFIED WELDERS CAN WELD UNDER ASME IX, AWS, & API WELDING CODES
- HOT WORKS AND CONFINED SPACE ENTRY TRAINED!



Aronson Welding Pipe Positioner

TABLE DIAMETER: 48"

CAPACITY: 10,000 lbs.



ARC 1000 STUD WELDER

PORTABLE MACHINES



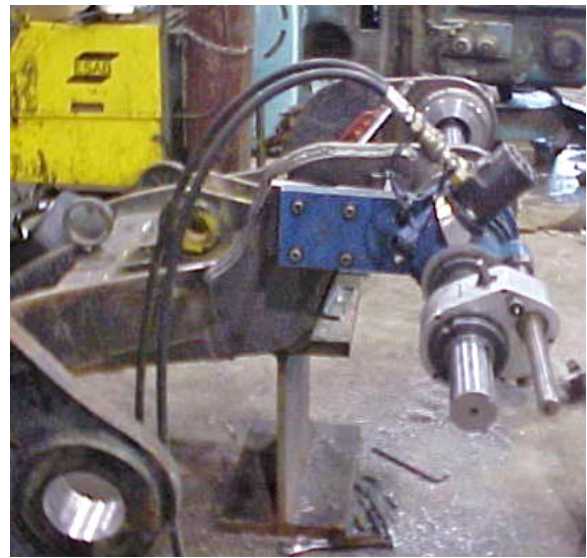
ON-SITE/FIELD PORTABLE MACHINING

- ✚ REVOLUTIONARY CLAMSHELLS ARE CAPABLE OF CUTTING ALL WALL THICKNESSES AND ALLOYS RANGING FROM 1.9" TO 110" OD/ID
- ✚ CAPABLE OF MILLING KEYWAYS UP TO 1".
- ✚ NEW TECHNOLOGY ALLOWS US TO HYDROSTATIC TEST PIPE IN MINUTES.
- ✚ HIGHLY TRAINED MACHINIST WITH OSHA SAFETY TRAINING AND DRUG TESTING.
- ✚ ALL PORTABLE MACHINES AND EQUIPMENT ARE AVAILABLE FOR RENTAL; CALL FOR RATES.
- ✚ SERVICES: BEVELING, FACING, SEVERING, VALVE REPLACEMENT, HEAT TREATING OR STRESS RELIEVING, WELD BEVELING, ALIGN BORING, HOLE BORING AND MILLING.



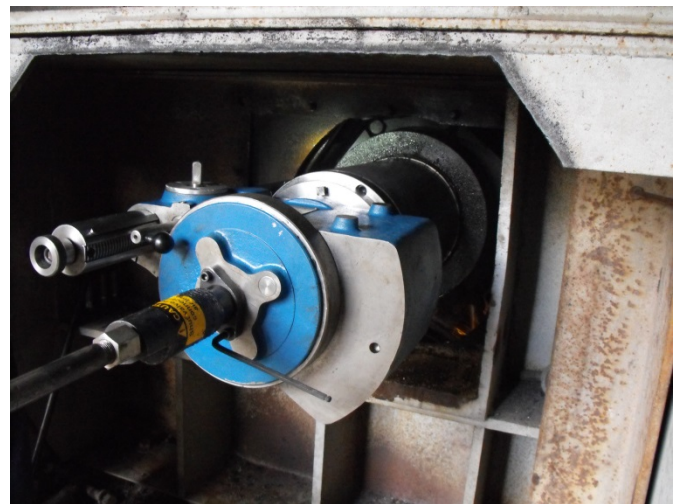
CLIMAX KEY MILL: KM3000

- ✚ KEYWAY LENGTH: 6"
- ✚ KEYWAY WIDTH: 1.25"
- ✚ SHAFT DIAMETERS: 0.75 – 10.5"



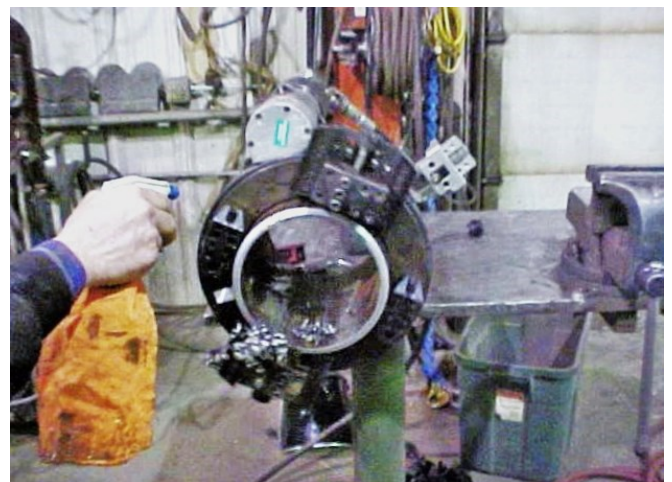
CLIMAX BB5000 BORING MACHINE

- ✚ BORING DIAMETER: 1.5" – 24"
- ✚ MAX STROKE: 36'



PL3000 PORTABLE LATHE

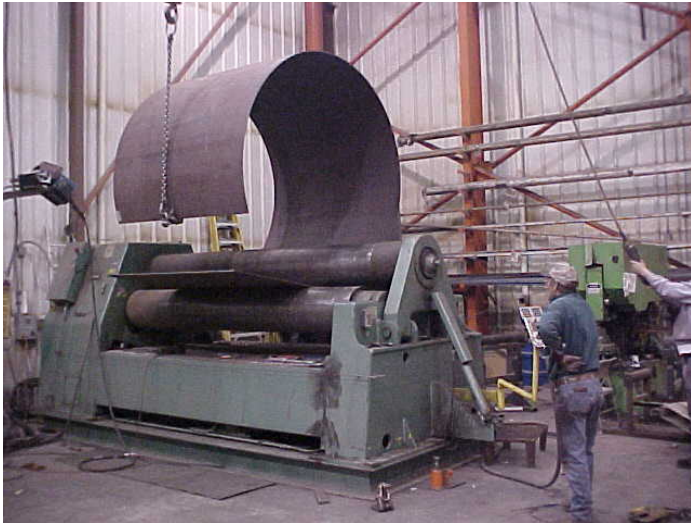
- ✚ TOOL REACH: 16" & UP TO 22" W/BAR EXTENSION
- ✚ TURNS SHAFTS FROM 4.0" – 11.25"



PORTABLE CLAMSHELL MACHINE

- ✚ CAPABLE OF MACHINING PIPES & FLANGE FACING FROM 4" TO 110" DIAMETER

FABRICATION EQUIPMENT



ROUND O HYDRAULIC BENDING ROLL

- ✚ CAPABLE OF ROLLING 1-1/4" THICK MILD PLATE BY 10' WIDE SHEETS; 36" MIN DIA.
- ✚ ALSO CAPABLE OF ROLLING CHANNEL, CONES, AND ANGLE IRON



LARGE SHEAR: STANDARD

- ✚ 1/2" X 12' MILD STEEL
- ✚ 3/8" X 12' STAINLESS STEEL



MARVEL VERTICAL METAL CUTTING BAND SAW

- ✚ MODEL# 8 - MARK - III



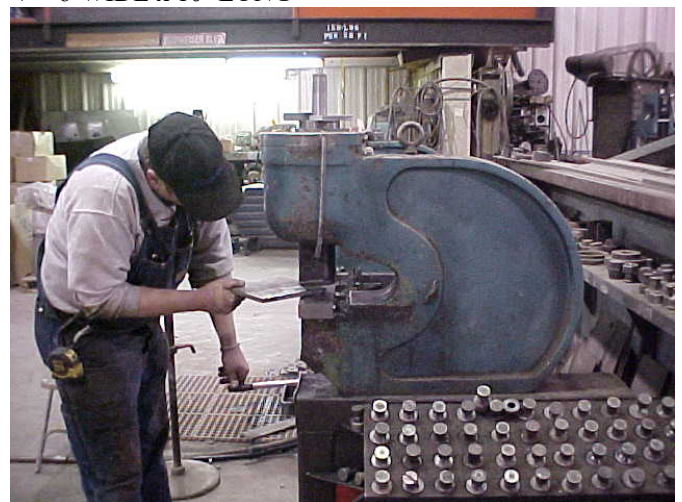
LARGE 25" BAND SAW: MARVEL

- ✚ VERTICAL BAND SAW, USED TO CUT VARIOUS ANGLES, STRUCTURAL BEAMS, PIPE, & CHANNEL.



CNC Plasma Burn Table

- ✚ 3/4" MILD STEEL & 1/2" STAINLESS STEEL
- ✚ 6' WIDE x 10' LONG



PUNCH PRESS: MUBEA

- ✚ USED TO PUNCH A VARIETY OF HOLES RANGING FROM 1/8" TO 1" THICK AND 1/4" TO 2" DIAMETERS; ROUND, OBLONG, SQUARE, ETC.

FABRICATION EQUIPMENT CONTINUED:



WDM Hydraulic Double Pinch Plate Bending Roll

- ✚ ROLL DIAMETER: 6"
- ✚ ROLL CAPACITY: 1/4" THICK x 5' LONG



WDM Hydraulic Angle Roll: #AR-31

- ✚ CAPACITY: 5/16" x 3' x 3"



WILTON DRILL PRESS

- ✚ SPINDLE SPEED: 12 STEPS

MISCELLANEOUS EQUIPMENT:



KNIGHT DRAGON HEAT TREATING OVENS

- ✚ SENTRY 2.0 DIGITAL TEMPERATURE CONTROLLER
- ✚ HEATS UP TO 2400 DEG. FAHFRENHEIT



CHURCHILL GRINDER

- ✚ HARD SURFACE GRINDER UP TO ROCKWELL 62
- ✚ SWING 22"
- ✚ CENTER 4'



INDUSTRIAL 6 WAY HEAT TREATMENT UNIT

- ✚ MONITORS UP TO 6 HEAT ZONES AT TEMPS IN EXCESS OF 2100 DEG. F
- ✚ PROVIDES TIME & TEMP CHART FOR PROCEDURAL VERIFICATION
- ✚ PRIMARILY USED TO HEAT TREAT WELDMENTS & FOR PRE-HEATING LARGE WELDING SECTIONS OR INTERFACE FIT ASSEMBLIES.



SURFACE GRINDER: GALLMEYER & LIVINGSTON

- ✚ 12" X 36" MAGNETIC TABLE, USED FOR PRECISION GRINDING AND TIGHT TOLERANCES.

FLAME SPRAYING/METALIZING

EQUIPMENT & PROCESSES:

ADVANTAGES OF FLAME SPRAYED COATINGS:

- ✚ NO DISTORTION OF THE PART BEING COATED
- ✚ INCREASED COMPONENT LIFE
- ✚ IMPROVED PERFORMANCE
- ✚ REDUCED PART WEAR AND EROSION
- ✚ REDUCES MAINTENANCE COST AND DOWNTIME



FUSING PROCESS W/METCO 6P SPRAY GUN



METALIZING PROCESS W/METCO #2 WIRE



METALIZING W/METCO 4P WIRE GUN